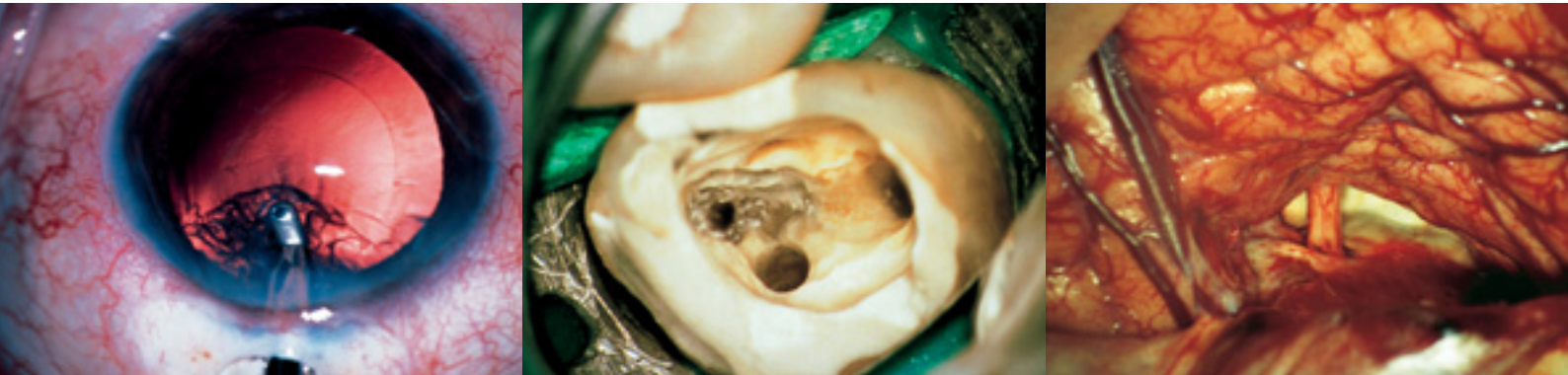


**Moving images always sharp in focus -
MediLive® Trio**



We make it visible.

Always a good digital image: MediLive® Trio.



Illustrations: Carl Zeiss archive

Innovative

With the new Progressive Scan, moving pictures are always in sharp focus – no annoying flicker on the monitor.

Brilliant

MediLive Trio delivers a brilliant video image to the monitor even when little light is available. The new low-light mode makes this possible.

Digital

Two digital ports on the MediLive Trio – DVI (Digital Visual Interface) and DV – enable high-quality camera images to be displayed directly on a digital monitor or be connected to a computer.

Easy to use

All the important functions on the MediLive Trio can be operated directly from the front of the camera controls. Configuration settings are programmed via an onscreen menu.

Maximum image quality

Ideal color rendition is tailored to medical applications. Even the slightest difference in color can be seen on the video monitor. Color rendition is particularly impressive with red and blue tones. Even the smallest difference in white to light brown bone structures can be easily recognized.

Freeze!

A push of a button and the moving picture becomes a still shot – an indispensable feature when illustrating important details to colleagues or students, or when explaining findings to a patient.



Technical data.



The camera head on the video lens



Control unit

	PAL	NTSC
Image sensor	Three 1/2" transfer/Progressive Scan CCD image sensors	
Horizontal resolution	800 lines	
Vertical resolution	PAL output: 500 lines Progressive Scan output: 582 lines	NTSC output: 400 lines Progressive Scan output: 494 lines
Signal-to-noise ratio	62 dB	
Scan system	Progressive Scan, 625 lines, 50 full frames/second; Interlace: 50 fields/second	Progressive Scan, 525 lines, 60 full frames/second; Interlace: 60 fields/second
Analog video output ports	2x FBAS (VBS), 2x Y/C, RGB, VGA (Progressive Scan)	
Digital video output ports	DV (Firewire/IEEE 1394a) DVI for LCD monitor	
Remote control	Switch for freeze frame (e.g. foot switch)	
Rated voltage	100 – 240 V~	
Power consumption	60 VA max.	
Size	75 mm x 320 mm x 340 mm (H x W x l)	
Weight	Camera head: 0.1 kg Control unit: approx. 4.5 kg	
Compliance	DIN EN ISO 9001:2000 DIN EN ISO 13485  	

Carl Zeiss Surgical GmbH
73446 Oberkochen
Germany

Fax: +49 (0) 7364/20-4823
Email: surgical@zeiss.de
www.zeiss.com/video